

Customizing the Reporting Web Site

June 2010

In This Article:

- Feature Overview
- Publishing Views
- Customizations

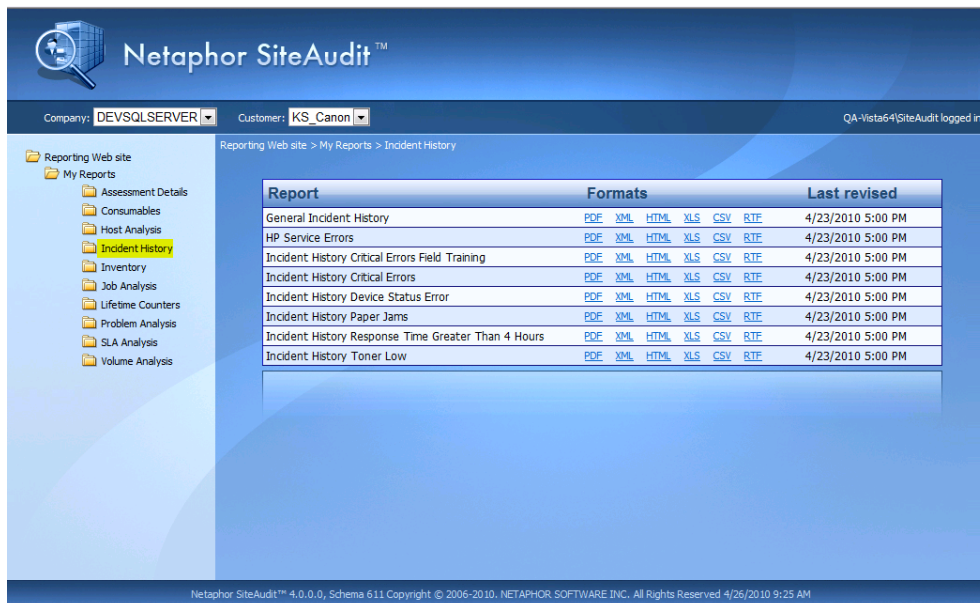
SiteAudit 4.0 offers many new features one of which is the ability to create reports from any SiteAudit view and publish the reports to a web site so that users can view reports using a Web browser. This article describes ways in which the Reporting Web site can be customized.

Feature Overview

The Reporting Web site is a new feature available in SiteAudit 4.0 that allows users to obtain SiteAudit reports over the Intranet or Internet. The Reporting Web site is an ASPX site that runs on Microsoft IIS 6 or IIS 7. Authorized users can publish reports to the Reporting Website directly from the SiteAudit Viewer and the reports can be accessed over the Web using Internet Explorer 7 or 8.

Figure 1 shows an example of the default Reporting Web site installed with SiteAudit 4.0. The Reporting Website contains a folder navigation hierarchy on the left and a table on the right that lists all of the reports contained within the selected folder. Figure 1 shows that the *MyReports/Inventory* folder is selected and six reports are contained in the folder. Each report can be viewed in any one of the available formats: PDF, XML, HTML, XLS, CSV, and RTF. Selecting HTML will open the report as an HTML document in a new browser window. Selecting one of the other format options will invoke the Open or Save dialog to allow the report to be opened immediately using the appropriate program or saved to a desired location.

Figure 1 –Netaphor SiteAudit Reporting Website



Customizing the Reporting Web Site

The Reporting Website is an ASPX site that runs on IIS6 or IIS7. The web site style is defined in a theme. The Reporting Web site is installed with the theme named, *default*. This theme can be customized as desired to reflect personal taste or company themes. The first step to take when customizing your Reporting Web site is to create a new theme.

Creating a New Theme

A new theme can be created easily by copying and pasting the *default* theme into the **App_Themes** folder and giving the theme a suitable name. Alternatively, users can back up the *default* theme and simply modify the original version as desired. Another theme is installed with the Reporting Web site named, *sample*. The *sample* theme is simplified and contains background colors instead of images. This theme may be easier for some users to modify. A screenshot of the Reporting Web site using the *sample* theme is shown at the end of this document.

Locate and copy the *default* theme, which is installed by default into the folder, *C:\Program Files\Netaphor\SiteAudit\ReportingWebsite\App_Themes\default*. Paste a copy of the *default* theme folder into App_Themes and give it a new name.

NOTE: Do not insert spaces into the theme name.

Once the new theme has been copied and renamed, then it is time to begin customizing it. The following sections describe the various ways in which the theme can be customized. Depending on the experience of the person performing the customizations, it is possible to completely redesign the look and feel of the site. However, it is advisable to limit customization to changing the header, footer, logos, fonts, and background colors. The following sections describe how to change these.

Specify a Theme in the Web.config File

The Reporting Website uses the *default* theme. Web site administrators can create their own theme to apply to the Reporting Web site. The *default* theme can be modified directly but if this is done, it is recommended that it is first backed up. If a theme is created that has a name other than *default*, then it is necessary to specify the theme name in the web.config file, which is located in the root folder of the web site. Open the web.config file and locate the following line within *appSettings* and replace the theme name with the new theme name.

```
<add key="DefaultTheme" value="default"/>
```

For example, if the new theme is named, *MyCompanyTheme*, then the line above should be changed to:

```
<add key="DefaultTheme" value="MyCompanyTheme"/>
```

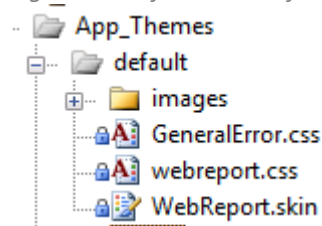
Once the change has been made, save the web.config file and the theme will be automatically applied to the Reporting Web site.

Theme Components

The theme applies all UI styling for the web site including graphics, fonts, colors, position information, etc. Site administrators can change the Reporting Web site theme as desired. For instance, it might be desirable to change the colors and logo to reflect those of your company.

All themes are located in the Reporting Web site **App_Themes** folder. Figure 2 shows the files that currently exist in the *default* theme used for the Reporting Web site.

Figure 2 – Default Theme for Reporting Web Site



CSS Stylesheets and Skins

The *default* theme contains two CSS files and one SKIN file. **GeneralError.css** is used to style the error page. The error page appears whenever an error occurs on the Web site. The **webreport.css** is the main stylesheet for the Reporting Web site and most customization takes place in this file. The **WebReport.skin** file allows users to set the text that is displayed in the header and footer. It is also possible to set the number of reports shown on a page and to customize the report folder icons.

Changing the Header

The Reporting Web site header background, logo, and company name are PNG images. It is recommended that users change only the logo and company name images. The following sections explain how to change the header.

Changing the Header Background

The Reporting Web site header background is an image but can easily be changed to use a background color instead of an image. If a background header image is present in the `#pnlHeaderImage` selector, remove it. Then add a `background-color` property to the `#pnlHeader` selector.

The goal of this section is to change the header appearance from this...



to this...



```
// Background image for the default theme
background-image: url(../../App_Themes/default/images/header.jpg);

// Header background color set to Brown
#pnlHeader background-color: Brown;
```

Changing the Company Logo

The company logo can be changed by modifying the background image in the `#pnlHeaderImage` CSS selector. The default image is specified as follows:

```
// Header logo for default theme
background-image:
url(../../App_Themes/default/images/siteauditicon_trans.png);
```

Add your new company logo to your theme images folder and specify the path and logo name. The *sample* theme contains the logo displayed in the *My Company Name* header shown above.

Changing the Company Name

The company name is an image in the *default* theme. Users can replace the image with their own company name image or the image can be replaced with text.

The company name can be changed by modifying the background image in the `#pnlHeaderCompanyNameImage` CSS selector. The default image is specified as follows:

```
// Header company name for default theme
background-image: url(../../App_Themes/default/images/netaphor.png);
```

Add the new company name image to your theme images folder and specify the path and file name. Alternatively, if you prefer to use text instead of an image, simply remove the `background-image` property specified above. Open the `WebReports.skin` file and locate the following control that has the the `SkinID`, `Default_lblHeaderText`. The example below shows the `Default_lblHeaderText` for the *default* theme.

```
<asp:Label runat="server" SkinID="Default_lblHeaderText" Text=""
Style="display:none;" ></asp:Label>
```

Remove the `Style` property and insert the company name into the `Text` property as shown in the example below.

```
<asp:Label runat="server" SkinID="Default_lblHeaderText" Text="My Company
Name, Inc." ></asp:Label>
```

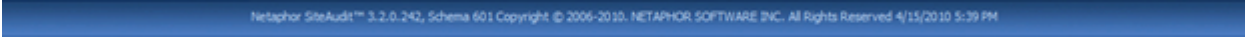


For an example of this, see the *sample* theme. A screenshot of the *sample* theme is shown at the end of this document.

Changing the Footer

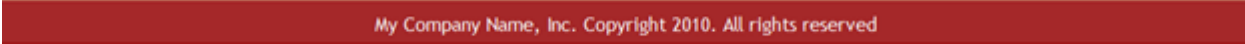
The Reporting Web site footer can be changed easily to display whatever text you desire.

The following examples will explain how to change the footer as exists in the *default* theme



Netaphor SiteAudit™ 3.2.0.242, Schema 601 Copyright © 2006-2010, NETAPHOR SOFTWARE INC. All Rights Reserved 4/15/2010 5:39 PM

to the footer that exists in the *sample* theme.



My Company Name, Inc. Copyright 2010. All rights reserved

Changing the Footer Text

Locate the text shown below in the sample theme, **WebReport.skin** file:

```
<asp:Label runat="server" SkinID="Default_lblFooterText" Text="My Company Name, Inc. Copyright 2010. All rights reserved" Visible="True"></asp:Label>
```

Replace the text highlighted in yellow with your footer text.

Changing the Footer Background

The *default* theme uses an image for the footer background. In this example, the background image is removed and replaced with the background color, Brown.

Locate the `#pnlFooter` CSS selector and replace the following line

```
background-image: url(../../App_Themes/default/images/footer.jpg);
```

with

```
background-color: Brown;
```

Changing Fonts

The Reporting Web site fonts can be changed by locating all instances of *font-family* or *font-size* in the **webreports.css** file and changing them to the desired font family and size.

Changing Background Colors

The Reporting Web site *default* theme uses a combination of background colors and background images. Several background images are placed strategically to appear as one common background. Thus it is not recommended that users attempt to add new background images. Instead, it is better to remove all background images and replace them with a background color. The theme named, *sample*, exists in the **App_Themes** folder and has had all background images removed and replaced with colors. To view the Reporting Web site using the *sample* theme, simply modify the theme name in the web.config file as explained previously in the section named, *Specify Theme in the Web.config File*. An example of the sample theme is shown at the end of this document in Figure 3.

The main background color should be applied to the HTML or BODY selector. The following background color is applied to the HTML selector for the Reporting Web site:

```
background-color: #84AEEF;
```

The background colors and images are specified in the **webreport.css** file located in the root folder of the theme. To change the background colors, search the **webreport.css** file for the *background-image* and *background-repeat* properties and replace them with a background-color property.

For example, the **#pnlWrapper** selector is used to configure the style for all of the information that exists on the main page of the Reporting Web site. A repeater image is assigned to the background and is repeated across the width of the browser. The following two statements should be replaced with one that defines the desired background color:

```
background-image: url(../../App_Themes/default/images/repeater.jpg);  
background-repeat: repeat-x;
```

The above two lines can be removed and the background color that is applied to the HTML selector will fill the browser window.

Find all instances of background-image and background-repeat and remove them. Add a background-color property to panels that you want to apply a unique color.

```
background-color: #84AEEF;
```

Adding a Custom Hyperlink

It is possible to add a custom hyperlink to the Reporting Web site page to direct users to a specific site. The Reporting Web site allows up to two custom hyperlinks that can be specified to direct users to a particular website. The following information explains how to add a hyperlink to the Reporting Web site.

Open the **webreports.skin** file located in the root folder of your theme and locate the element with the SkinID, *Default_linkExtra1*.

```
<asp:HyperLink runat="server" SkinID="Default_linkExtra1" CssClass="ExtraHyperlink1"
NavigateUrl="http://www.netaphor.com" Text="NETAPHOR SOFTWARE, INC." Visible="false" />
```

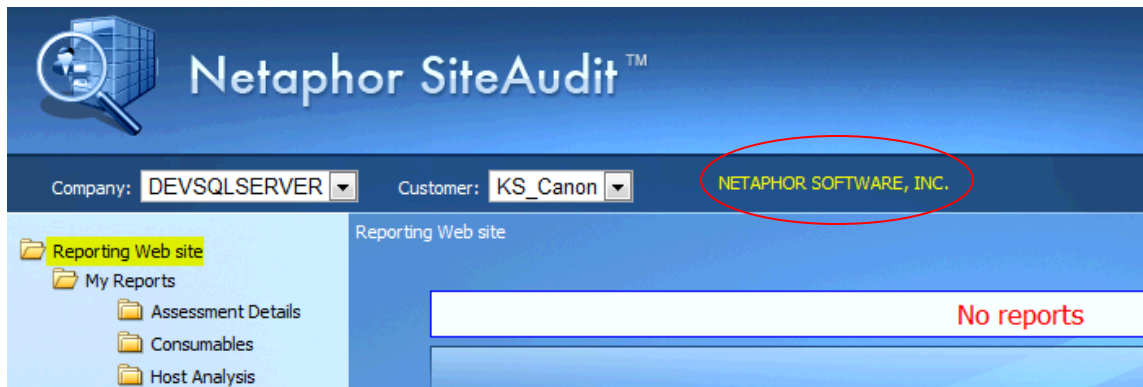
- Modify the **NavigateUrl** property to point to the desired website.
- Modify the Text property to display the desired link text on the Reporting Web site page
- Change the Visible property to “true”

Open the **webreports.css** file located in the root folder and locate the element at the end of the file with the CSS class name, *ExtraHyperlink1*.

The sample style for the image is currently as follows:

```
.ExtraHyperlink1
{
    display: block;
    position: absolute;
    top: 108px;
    left: 450px;
    color: Yellow;
    text-decoration: none;
}
```

Modify the style and position to display the link as desired. The style specified above will place a yellow hyperlink with the text, NETAPHOR SOFTWARE, INC. in the toolbar area of the Reporting Web site as shown in the following screen shot.



Adding a Custom Image

It is possible to add custom images to the Reporting Web site page. The following information explains how to add an image to the Reporting Web site.

First, add your custom image/s to the theme/images folder.

Open the **webreports.skin** file located in the root folder of your theme and locate the element with the SkinID, *Default_imageExtra1*.

```
<asp:Image runat="server" SkinID="Default_imageExtra1" CssClass="ExtraImage1"
ImageUrl="~/App_Themes/sample/images/logo.png" Visible="true" />
```

- Modify the **ImageUrl** property to point to the desired image. In the above example, the folder_closed.png image is used. Note the image must be added to your theme/images directory.
- Change the Visible property to "true"

Open the **webreports.css** file located in the root folder and locate the element at the end of the file with the CSS class name, *ExtraImage1*. Modify the style to position the image in the desired location.

```
.ExtraImage1
{
    display: block;
    position: absolute;
    top: 10px;
    left: 425px;
}
```

The sample image is absolutely positioned such that it appears in the header as shown below.



Customized Reporting Web Site

The figure below shows an example of a Reporting Web site that has been customized. This customized theme is included in the installation of the Reporting Web site and is named *sample*. Users can backup and modify the *sample* theme instead of using the *default* theme to construct a custom theme.

Figure 3 – Sample of Customized Reporting Web Site

The screenshot displays a web application interface for 'My Company Name, Inc.'. At the top, there is a header with the company name and a logo of fruit. Below the header, a yellow bar contains user information: 'Company: bison', 'Customer: testdb', and 'KSDEVSiteAudit logged in'. The main content area has a breadcrumb trail: 'Reporting Web site > My Reports > Incident History'. On the left, a navigation menu lists various report categories, with 'Incident History' highlighted. The central part of the page features a table with the following data:

Report	Formats	Last revised
General Incident History	PDF XML HTML XLS CSV RTF	4/23/2010 3:57 PM
HP Service Errors	PDF XML HTML XLS CSV RTF	4/23/2010 3:57 PM
Incident History Critical Errors Field Training	PDF XML HTML XLS CSV RTF	4/23/2010 3:57 PM
Incident History Critical Errors	PDF XML HTML XLS CSV RTF	4/23/2010 3:57 PM
Incident History Device Status Error	PDF XML HTML XLS CSV RTF	4/23/2010 3:57 PM
Incident History Paper Jams	PDF XML HTML XLS CSV RTF	4/23/2010 3:57 PM
Incident History Response Time Greater Than 4 Hours	PDF XML HTML XLS CSV RTF	4/23/2010 3:57 PM
Incident History Toner Low	PDF XML HTML XLS CSV RTF	4/23/2010 3:57 PM

At the bottom of the page, a footer contains the text: 'My Company Name, Inc. Copyright 2010. All rights reserved'.