

## SiteAudit Compact Security

June 2011

### In This Article:

- Security Overview
- Compact Operations
- Secure Reports Web Site

### Security Overview

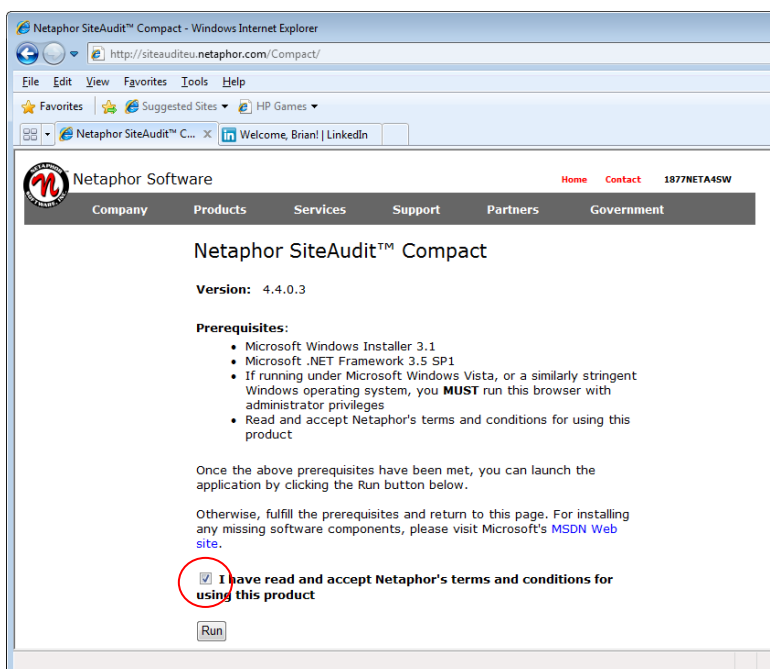
SiteAudit Compact is a MPS application for remotely collecting local and networked printer data. It provides a secure and easy way to collect counts, supplies, asset and other information without installation. It is IT friendly. Some of the key security points are listed below.

- Hosted Compact server at Partner or Netaphor is certified with a VeriSign® SSL Certificate
- Compact server is authenticated by a valid certificate; it is not self certifying (less secure)
- SiteAudit connection to customer is over secure HTTP/SSL (HTTPS)
- All Data collected is transported over HTTPS (same security level as credit card transaction.)
- Data is hosted Sites BEHIND Partner or Netaphor firewall, and access is protected with encrypted password
- External access to data is only accessible via the Reports web site
- Reports web site access is protected via firewall and encrypted passwords

### Compact Operations

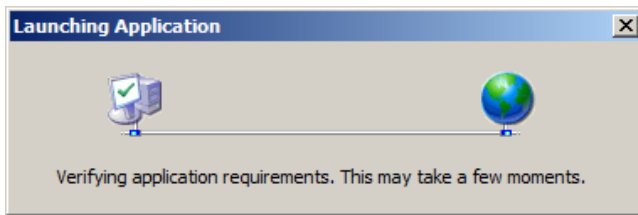
To run Compact the first visit the Compact web site and download the application.

Go to the Compact web site, URL depends on region of the world, ask [support@netaphor.com](mailto:support@netaphor.com)

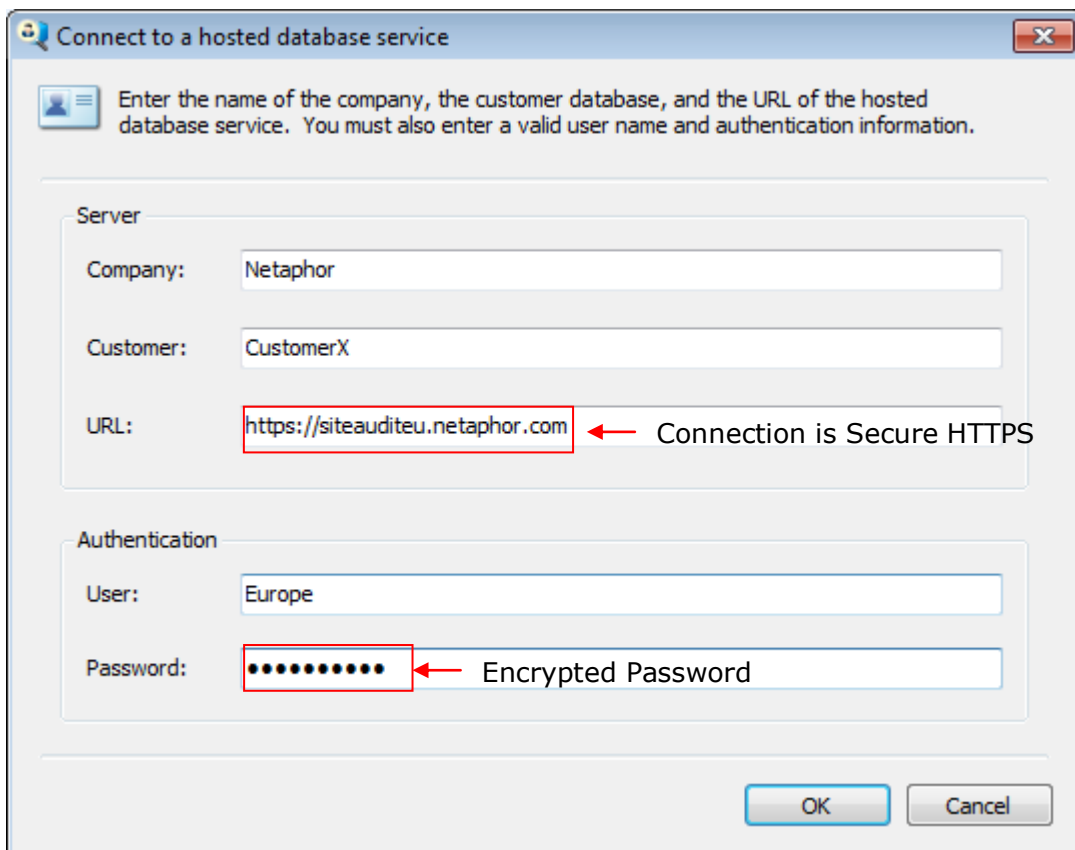


Read and agreement to licensing information then check box and Select Run.

The server at the hosted site is contacted and begins the process.



Compact application cannot run until Credentials are verified and server is authenticated with a signed certificate.



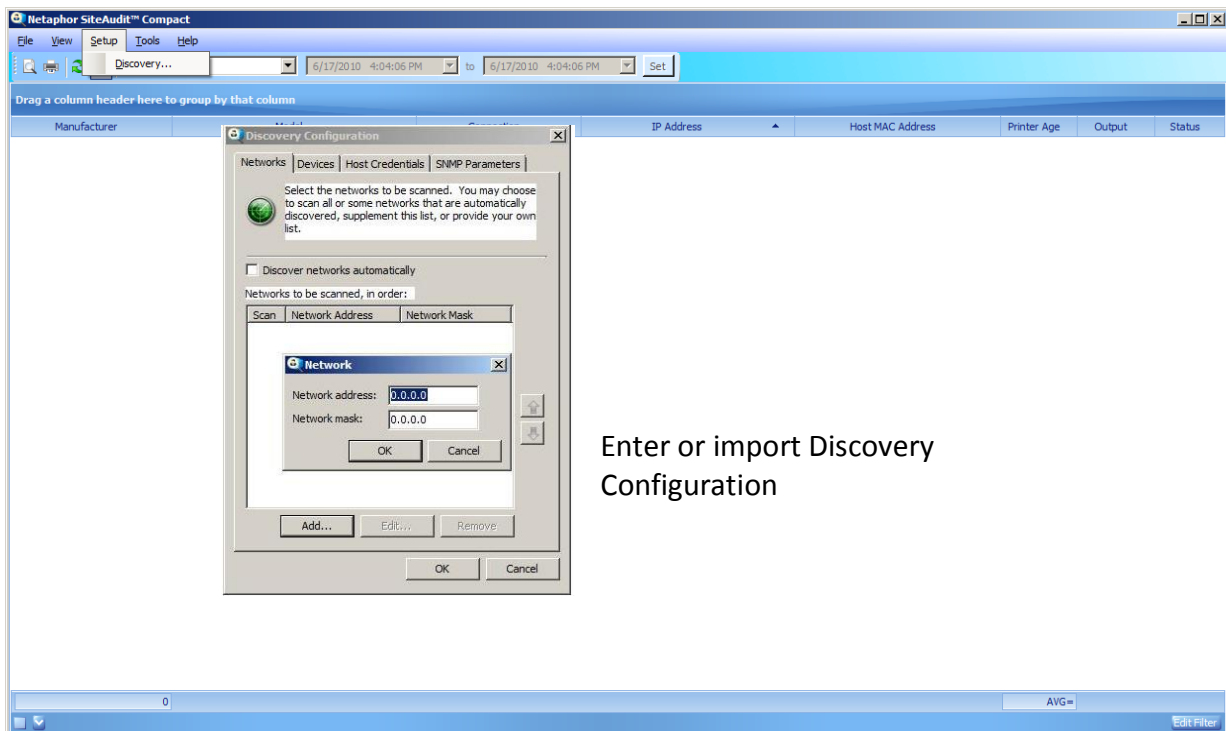
Credentials are provided by Netaphor prior to beginning a Compact deployment.

Verifying Customer  
Customer: **CustomerX**  
User: **Europe**  
Password: **XXXXXX**

**Prerequisite Note:**

- 1) If running on Vista/Windows 7/2008 Server with UAC run the browser elevated (admin)
- 2) Client should have .NET3.5 installed, also to use .NET security

## SiteAudit Compact Application



Enter or import Discovery Configuration

Once data collection begins Netstat can verify Port Connection shows SiteAudit Compact is using HTTPS

```

TCP 0.0.0.0:80 LISTENING 4
TCP 0.0.0.0:135 LISTENING 804
TCP 0.0.0.0:443 LISTENING 4060
TCP 0.0.0.0:445 LISTENING 4
TCP 0.0.0.0:554 LISTENING 2348
TCP 0.0.0.0:2869 LISTENING 4
TCP 0.0.0.0:3389 LISTENING 1220
TCP 0.0.0.0:5357 LISTENING 4
TCP 0.0.0.0:10243 LISTENING 4
TCP 0.0.0.0:44191 LISTENING 4060
TCP 0.0.0.0:49152 LISTENING 432
TCP 0.0.0.0:49153 LISTENING 872
TCP 0.0.0.0:49154 LISTENING 988
TCP 0.0.0.0:49155 LISTENING 496
TCP 0.0.0.0:49156 LISTENING 480
TCP 0.0.0.0:50136 LISTENING 1740
TCP 10.0.1.19:135 ESTABLISHED 804
TCP 10.0.1.19:139 LISTENING 4
TCP 10.0.1.63:139 LISTENING 4
TCP 10.0.1.63:49188 ESTABLISHED 4060
TCP 10.0.1.63:49209 ESTABLISHED 4060
TCP 10.0.1.63:49855 ls ESTABLISHED 4
TCP 10.0.1.63:51537 ESTABLISHED 3452
TCP 10.0.1.63:55673 ESTABLISHED 4232
TCP 10.0.1.63:55680 ESTABLISHED 5096
TCP 10.0.1.63:56095 ls ESTABLISHED 4
TCP 10.0.1.63:58782 ESTABLISHED 3452
TCP 10.0.1.63:58895 ESTABLISHED 4060
TCP 10.0.1.63:58920 ESTABLISHED 3280
TCP 10.0.1.63:58939 ip-66-80-81-205:https ESTABLISHED 4528
TCP 10.0.1.63:58940 10.0.0.99:8456 ESTABLISHED 0
TCP 10.0.1.63:58941 ip-66-80-81-205:https ESTABLISHED 4528
TCP [::]:80 LISTENING 4
TCP [::]:135 LISTENING 804
TCP [::]:445 LISTENING 4
TCP [::]:554 LISTENING 2348
  
```

