



MetaConsole

Netaphor

The network management company



Based in Irvine, CA, Netaphor provides software development services and tools for developing management solutions to Fortune 1000 companies such as Canon, Cisco, 3Com, Konica Minolta, and Toshiba. Storage and imaging vendors, such as Quantum Corporation and Konica Minolta, bundle our MetaConsole product with their hardware.

Netaphor provides a complete solution — application- and protocol-level tools, enterprise console clients, and services from MIB design to agent and client implementation.

Highlights

- SNMP (v1/v2c/v3)
- Java-based multi-platform support
- Automatic integration with Unicenter, OpenView, and NetView
- Auto discovery
- Log alarms to external DB
- Localization with double-byte support
- Ready to deploy using MetaConsole installer

"Licensing MetaConsole gives us a time-to-market advantage in providing our management aggregation benefits to the marketplace." – Vladimir Miloushev, CTO, Z-Force, Inc.

Do you need to develop a management application? Supporting SNMPv3? Integrating with HP OpenView, IBM NetView, or CA Unicenter?

MetaConsole provides everything you need to create and deploy your enterprise management application. It has built-in support for the major enterprise management systems, SNMPv3, multi-language capability, an alarm log and browser, and an easy-to-use developer API. MetaConsole also includes smart plug-ins for CA Unicenter, HP OpenView, and Tivoli Enterprise, and works as well in a standard Web browser.

MetaConsole-based applications manage a variety of storage, imaging, server, and other network devices. Alarm management, normally available only in high-end consoles, is integrated within MetaConsole's MMC and browser implementations. With its scalable architecture, MetaConsole can be deployed in a workgroup using MMC and browser-based solutions, while large enterprises can deploy one or more of the MetaConsole smart plug-ins.

Benefits

A manufacturer of hardware or software, when providing management capabilities, benefits from MetaConsole's short development cycle and support of many consoles. MetaConsole is an open-ended solution, allowing manufacturers to offer their customers a management environment in which MetaConsole solutions of all manufacturers can operate together.

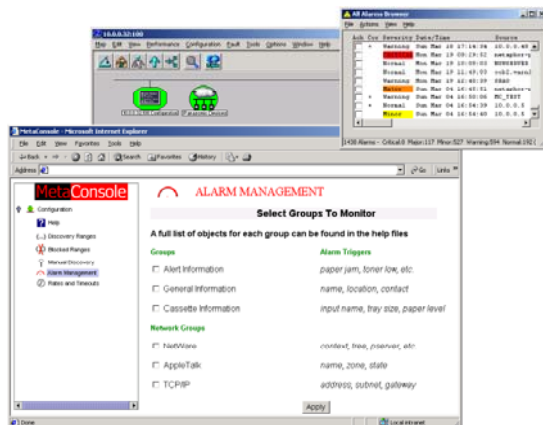
An enterprise that wants to consolidate its management tools under one umbrella benefits from the consistency and uniformity that MetaConsole provides.

An integrator or developer who creates custom solutions benefits from MetaConsole's easy and powerful tools — easier and more powerful than a platform's or management console's tools and available third-party tools. Creating a MetaConsole solution allows developers to concentrate on the management aspects of their devices instead of environmental (console or platform) issues.

Licensing

To create a management solution using MetaConsole, you must license the MetaConsole SDK. Netaphor charges licensing fees for the Metaconsole server and client components that are distributed as part of solutions built with the SDK. Fees can be under a dollar, depending on quantity.

An evaluation version of the MetaConsole SDK is available for download. Netaphor also provides professional services to aid your development process.



www.Netaphor.com
1-877-NETA4SW